

GLENEITH
BORDER LEICESTER STUD
GANMAIN 2702



BORDER LEICESTER STUD

17th ANNUAL
ON-PROPERTY SALE
Friday, October 9, 2020
“GLENEITH PARK” GANMAIN

Commencing at 11.00am



Inspection from 9.00am or by appointment
Morning tea and light luncheon available

OFFERING 120 FLOCK RAMS
ABOVE AVERAGE ON BLX INDEX



www.gleneith.com.au
wkember@activ8.net.au

This Sale will be
Covid-19 Compliant



BORDER LEICESTER STUD

WES KEMBER (02) 6927 6295 - 0428 276 295
NATHAN 0428 276 299
WILL KEMBER OAM (02) 6927 6227 - 0427 276 227



**WE LIVE
YOUR
BUSINESS
LIKE YOU
DO**

Glenn Fordyce | m.0428 317 059
Bryan Maher | m.0428 529 035
Dom O'Mahoney | m.0408 622 195
Mick Anderson | m.0409 630 954
Joe Wilks | m.0408 681 863
Tim McKean | m.0429 669 049
Jenni O'Sullivan | Stud Stock Specialist | m.0428 222 080
Tim McMeekin | District Wool Manager | m.0427 830 003
Rob Inglis | Livestock Production Advisor | m.0439 739 055
Matt Hard | Insurance | m.0400 327 223
Jo Heeney | Agri Finance Manager | m.0428 503 783

Wagga Wagga P. 02 6923 4666
17-27 Kincaid Street, Wagga Wagga
E. wagga_wagga@elders.com.au

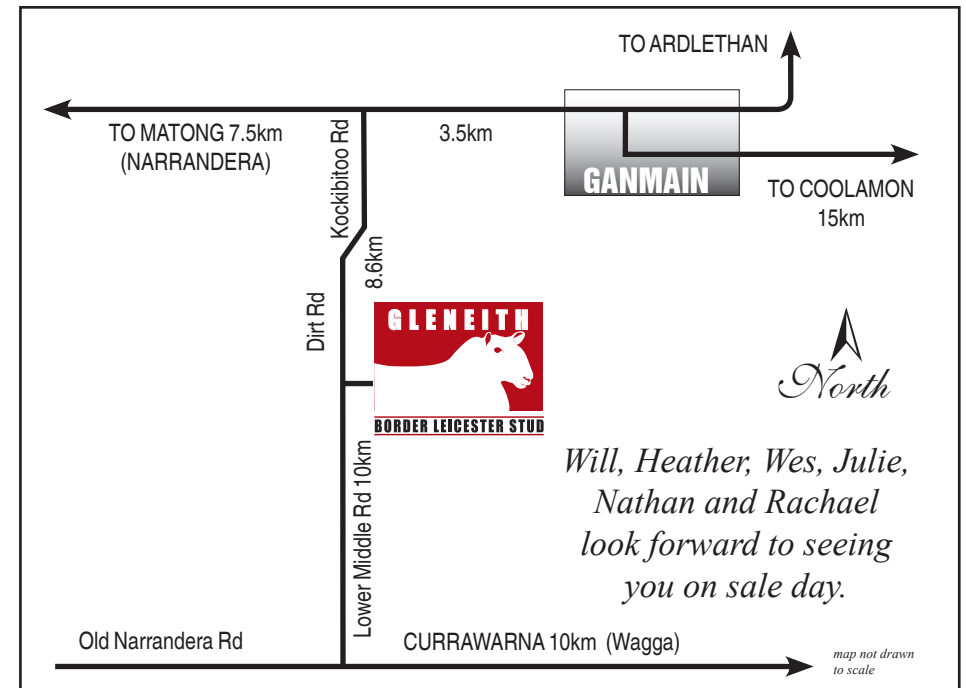
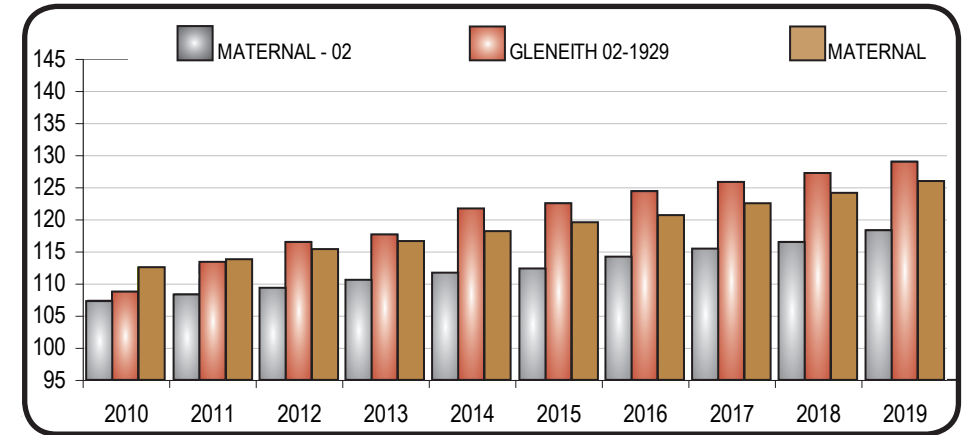
Narrandera P. 02 6950 7000
137-149 Audley St, Narrandera
E. narrandera@elders.com.au

GLENEITH Wesley Kember

02-1929

Analysis: **MATERNAL - 02**

Dated 15-Aug-20





Animals born in 2019 Count 13737

Band	Bwt kg	Wwt kg	Mwvt kg	Pwvt kg	Plat mm	Pemd mm	Ywt kg	Yfat mm	Yemd mm	Ygfw %	Yfd u	Pfec %	NLW %	YNLW %	PSC cm	Awt kg	MCP+ Mat\$	BLX	MMP+ Mat\$	
0	-0.3	10.8	2.6	17.3	3.3	3.6	19.3	3.8	2.9	24	-3.4	-72	32	41	6.7	22.3	164.3	163.9	202.4	183.6
1	-0.1	8.3	2.1	13.2	1.4	1.9	14.7	1.8	1.5	16	-2.2	-56	25	31	5.1	17.1	152.2	150.2	186.2	168.9
2	0.0	7.9	1.9	12.6	1.2	1.8	14.0	1.6	1.4	15	-1.8	-53	23	28	4.8	16.2	148.9	146.9	181.7	165.4
3	0.0	7.7	1.8	12.1	1.1	1.6	13.4	1.4	1.3	14	-1.6	-50	21	26	4.5	15.6	146.6	144.1	179.2	162.7
4	0.0	7.5	1.8	11.7	1.0	1.5	13.0	1.3	1.2	13	-1.4	-48	20	25	4.3	15.2	144.7	141.9	176.2	160.3
5	0.0	7.3	1.7	11.4	0.9	1.4	12.7	1.2	1.1	13	-1.3	-46	20	23	4.2	14.8	142.8	140.1	173.9	158.0
10	0.1	6.7	1.5	10.4	0.6	1.1	11.7	0.8	0.9	11	-0.7	-37	17	18	3.7	13.8	136.3	134.3	165.0	150.4
15	0.1	6.3	1.4	9.8	0.4	1.0	11.1	0.6	0.7	10	-0.5	-33	15	15	3.4	13.1	132.5	131.0	160.0	146.2
20	0.2	6.0	1.2	9.2	0.3	0.8	10.6	0.4	0.6	9	-0.3	-30	14	14	3.1	12.5	129.9	128.5	156.2	143.1
25	0.2	5.8	1.1	8.8	0.2	0.7	10.2	0.2	0.5	8	-0.1	-27	13	13	2.9	12.0	127.7	126.5	153.4	140.8
30	0.2	5.5	1.1	8.5	0.1	0.6	9.8	0.1	0.4	7	0.1	-24	12	12	2.8	11.5	126.0	124.6	150.9	138.7
35	0.2	5.3	1.0	8.1	0.0	0.5	9.5	0.0	0.3	7	0.2	-22	11	11	2.6	11.1	124.3	122.8	148.7	136.6
40	0.2	5.1	0.9	7.8	-0.1	0.4	9.1	-0.1	0.3	6	0.3	-20	11	10	2.5	10.7	122.6	121.2	146.4	134.6
45	0.3	4.9	0.8	7.5	-0.2	0.3	8.8	-0.2	0.2	6	0.4	-18	10	10	2.4	10.3	121.0	119.5	144.2	132.6
50	0.3	4.7	0.7	7.2	-0.2	0.2	8.5	-0.3	0.1	5	0.5	-16	9	9	2.3	9.9	119.1	117.6	141.9	130.6
55	0.3	4.5	0.7	6.9	-0.3	0.1	8.1	-0.5	0.0	5	0.7	-14	8	8	2.2	9.5	117.5	116.0	139.7	128.5
60	0.3	4.3	0.6	6.6	-0.4	0.0	7.8	-0.6	0.0	4	0.8	-12	8	8	2.1	9.2	115.8	114.1	137.4	126.5
65	0.3	4.1	0.5	6.3	-0.4	-0.1	7.4	-0.7	-0.1	4	0.9	-10	7	7	1.9	8.7	114.0	112.4	134.9	124.5
70	0.3	3.9	0.4	5.9	-0.5	-0.1	6.9	-0.8	-0.2	3	1.1	-7	6	7	1.8	8.3	112.3	110.7	132.2	122.4
75	0.4	3.7	0.3	5.5	-0.6	-0.2	6.5	-0.9	-0.2	2	1.2	-5	5	6	1.7	7.8	110.7	109.2	129.2	120.1
80	0.4	3.4	0.2	5.0	-0.7	-0.3	6.0	-1.0	-0.3	2	1.3	-1	3	5	1.5	7.3	109.0	107.6	125.8	117.9
85	0.4	3.0	0.1	4.5	-0.8	-0.4	5.4	-1.1	-0.4	1	1.5	3	2	4	1.4	6.6	107.2	106.0	122.1	115.4
90	0.4	2.6	-0.1	3.9	-0.9	-0.6	4.7	-1.3	-0.6	0	1.8	7	0	3	1.2	5.9	105.0	104.0	118.0	112.5
95	0.5	2.1	-0.4	3.1	-1.1	-0.8	3.8	-1.6	-0.8	-2	2.3	14	-2	0	0.9	4.9	102.1	101.2	112.6	109.0
96	0.5	1.9	-0.4	2.8	-1.1	-0.8	3.6	-1.7	-0.8	-2	2.4	16	-3	0	0.8	4.7	101.3	100.5	111.4	108.0
97	0.5	1.7	-0.5	2.6	-1.2	-0.9	3.3	-1.8	-0.9	-3	2.5	18	-3	-1	0.6	4.4	100.3	99.6	109.7	106.8
98	0.6	1.5	-0.7	2.3	-1.3	-1.0	3.0	-2.0	-1.0	-4	2.7	23	-4	-2	0.5	4.0	98.8	98.2	107.5	105.3
99	0.6	1.2	-0.9	1.7	-1.5	-1.3	2.5	-2.3	-1.2	-5	2.9	28	-5	-3	0.2	3.4	96.7	96.3	103.8	103.1
100	0.8	-1.8	-2.0	-2.3	-3.4	-3.3	-1.3	-5.6	-3.0	-13	4.1	68	-10	-8	-1.9	0.0	79.5	80.5	84.0	90.7

SHEEP GENETICS



HISTORY

THE "Gleneith" Border Leicester Stud was originally established by Fred Kember Snr in 1922. However official Breed Society registration was not sought until 1932 (F665). The stud grew from small beginnings to around 400 ewes being put to the rams in 1944. In 1948 with the death of Fred Kember Snr. the flock slipped from registration. Fred Kember Jnr. purchased the flock from the estate in 1950 and had the flock re-registered with the same prefix of "Gleneith" but with the current flock number (F1929).

Fred Jnr continued breeding Border Leicesters with ewe numbers generally between 300-400. He regularly took his show team to the local shows and also showed at the Albury Sheep Show, which was held in the old Wool Store and then for a few years at the Albury Show Ground. In 1995 the stud incorporated all family members with Will and Wes continuing the stud tradition. Nathan is now the fifth generation of the Kember family to be actively involved in all areas of stud management and in 2004 we held our inaugural on property sale.

THE BLX INDEX

The Border Leicester Cross index is modelled on a production system using sires crossed to merino dams producing first cross progeny. The index identifies high early growth animals with a significant response in post weaning weight and maternal ability. It also aims for an improvement in carcase eye muscle depth and number of lambs weaned. There is a small improvement in fleece weights. The index also recognises the importance of capping adult weight over time. This index allows for the fact that 50% of the 1st cross performance comes from the Border ram. An index of 100 is given as the average for the breed when recording first started. Every point above 100 indicates \$1 extra income from each ewe joined.

An index of 120 indicates that the ram will produce \$20 extra lamb value for every ewe joined. In a working lifetime of 4 years, a ram will produce 200 progeny, the extra value by that ram is \$20 times 200 = \$4000.

HEALTH STATUS

Gleneith Stud has obtained OJD MN3v status and all our rams have been vaccinated with Guidar vaccine and are approved vaccinates . We are Ovine Brucellosis Accredited Free Flock and Foot Rot Free.

SEMEN RETAINED

Gleneith has collected semen from Lot 4 282-19 and retains the right to use or sell at their discretion.

SUPERBORDERS

SuperBorder\$ is the brand name for Border Leicester Rams that are of high genetic merit for a first cross production system. The official SuperBorder yellow ear tags allow SuperBorder rams to be easily identified.

To qualify as a SuperBorder a Border Leicester ram must be above the 50th percentile for the breed based on the BLX index (Border Leicester Cross Index). The 50th percentile index value is calculated based on the 15th of August LAMBPLAN run each year. It is used to determine SuperBorder rams for that selling season. The BLX Index has been developed for production systems using Border Leicester sires crossed to Merino dams to produce first cross progeny. BLX balances maintaining mature size with significant improvements in early growth and reproduction. A higher BLX index targets animals that are more profitable in this production system.

Not all rams sold by SuperBorder members are necessarily SuperBorder quality, but are bred by committed, registered breeders striving for genetic gain. SuperBorder rams must be structurally sound and of good breed type.

The SuperBorder\$ group is made up of a number of studs across 5 states who work together in meeting market requirements for objectively measured maternal genetics in the Australian Lamb Industry. SuperBorder\$ members are industry leaders with longstanding involvement in research, trials and industry resource flocks.

First cross lambs sired by 100% SuperBorder rams may be sold as 'Bred from SuperBorder\$'. Special yellow pen cards and SuperBorder\$ ear tags are available to identify these animals when sold in physical sales. Virtual yellow sale cards are also available for SuperBorder\$ progeny sold on online sale platforms. Please speak with us if you would like either of these marketing materials.

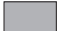
*4% Rebate to outside agents accompanying clients
and settling on their behalf within 7 days.*

STUD RAMS

Any ram within the sale catalogue can be purchased as a stud ram, with the following criteria.

- A minimum price of \$2000 will apply to a ram purchased as a stud ram
- Must be notified to the auctioneer on the fall of the hammer.

KEY

BT:	Birth Type, single twin or triplet
BWT:	Birth Weight
MWWT:	Maternal weaning weight; related to milking ability of the female progeny
WWT:	Weaning weight; (with MWWT relevant to the sucker industry)
PWWT:	Post weaning weight; a good indicator of the lamb's ability to grow after weaning to market weights
PFAT:	Post weaning fat
PEMD:	Post weaning eye muscle depth
YGFW:	Yearling greasy fleece weight
NLW:	Number of lambs weaned
INDEX:	Sum total of all of the above, collated to a general lamb/ first cross index.
\$:	Signifies \$superborder\$
Acc:	Accuracies for EBVs as a percentage
	Shaded box represents top 10%

LAMBPLAN EBVs are calculated from raw data collected by breeders and accredited LAMBPLAN operators. LAMBPLAN does not oversee or audit the collection of this data and therefore neither LAMBPLAN nor Meat and Livestock Australia accept any responsibility for the accuracy of the data. LAMBPLAN EBVs are designed to give the best possible estimate of true genetic merit from that data, i.e., the estimate that maximises the correlation between EBVs and true genetic merit. EBVs can only be compared between flocks or between management groups within a flock when a pedigree link exists and that link is used.

GLENEITH SIREs

Tag No	Bwt	Mwwt	Wwt	Pwwt	Plat	Pemd	Ygtw	NLW	BLX	SIRE	DAM
103-13 96	0.3 91	0.1 97	6.3 97	9.2 97	0.1 97	1.1 96	4.7 76	3	124.6	Gleneith 87-10	Gleneith 326-10
275-14 92	0.2 77	0.9 95	5.7 95	7.8 94	-0.5 93	1.0 91	1.2 61	14	129.0	Gleneith 242-12	Gleneith 519-12
150-15	-0.1	0.8	3.8	7.0	-0.4	0.4	-2.3	11	128.0	Gleneith 69-13	Gleneith 279-12
120-16 85	0.4 61	2.1 89	4.8 90	7.3 86	-1.4 84	0.0 86	5.0 54	14	127.1	Gleneith 87-10	Gleneith 319-14
215-16 90	0.4 54	0.7 94	7.7 94	11.0 93	-0.8 92	-0.3 91	10.0 48	12	124.2	Gleneith 275-14	Gleneith 247-13
47-17 87	0.5 52	2.4 92	8.7 92	13.0 92	-1.2 90	-0.7 86	2.9 47	13	134.0	Gleneith 434-15	Gleneith 52-15
311-17 87	0.5 59	0.3 92	6.6 92	9.8 92	0.1 91	0.7 89	-3.8 51	8	123.1	Gleneith 103-13	Gleneith 47-15
358-17 87	0.4 61	1.5 91	7.3 91	11.2 91	-0.5 90	1.0 87	5.2 56	16	142.0	Johnos 83-11	Gleneith 33-14

INTRODUCED SIREs

Tag No	Bwt	Mwwt	Wwt	Pwwt	Plat	Pemd	Ygtw	NLW	BLX	SIRE	DAM
Kegra 371-17 86	0.2 86	1.3 57	7.4 91	11.8 91	0.8 91	0.8 90	23.1 88	12 51	136.9	Kegra 115-13	Kegra 326-15

100 RAMS IN PENS OF TWO

Lot No	Tag No	Bt	Bwt	Mwwt	Wwt	Pwwt	Plat	Pemd	Ygtw	NLW	BLX	SIRE
Lot 117 Acc	393	1	0.4 66	0.9 56	6.2 72	9.1 72	-0.6 72	0.5 70	2.0 73	9 48	128.8 \$	Gleneith 103-13 Purchaser.....PRICE
Lot 118 Acc	436	2	0.4 65	0.9 45	6.8 71	10.0 72	-0.5 71	0.7 69	9.0 71	11 40	128.2 \$	Gleneith 215-16 Purchaser.....PRICE
Lot 119 Acc	117	2	0.2 63	1.0 42	6.0 70	9.0 70	0.0 70	0.3 67	1.2 70	15 35	129.3 \$	Gleneith 215-16 Purchaser.....PRICE
Lot 120 Acc	469	2	0.4 64	1.2 49	7.0 70	10.8 71	-0.9 70	-0.5 68	-0.7 68	14 39	129.3 \$	Gleneith 47-17 Purchaser.....PRICE

100 RAMS IN PENS OF TWO

Lot No	Tag No	Bt	Bwt	Mwwt	Wwt	Pwwt	Pflat	Pemid	Ygtw	NLW	BLX	SIRE
Lot 109	414	1	0.2	0.9	5.7	8.4	-0.2	0.6	0.7	8	123.8	Gleneith 47-17
Acc			64	48	71	71	71	68	68	39	\$	Purchaser.....PRICE
Lot 110	468	2	0.5	1.2	7.3	11.0	-0.9	-0.9	5.5	13	127.4	Gleneith 47-17
Acc			64	49	70	71	70	68	68	39	\$	Purchaser.....PRICE
Lot 111	96	1	0.3	0.4	6.0	9.3	-0.5	0.6	8.0	18	132.4	Gleneith 215-16
Acc			64	42	70	70	70	67	71	39	\$	Purchaser.....PRICE
Lot 112	243	2	0.5	1.4	6.6	9.4	-1.0	0.6	1.1	13	133.6	Gleneith 358-17
Acc			62	45	69	70	69	67	69	40	\$	Purchaser.....PRICE
Lot 113	208	2	0.4	1.2	7.1	10.8	-0.4	0.7	0.2	10	132.4	Gleneith 103-13
Acc			66	56	72	72	72	69	73	47	\$	Purchaser.....PRICE
Lot 114	377	2	0.1	1.5	4.8	7.7	0.2	0.7	-0.7	15	134.8	Gleneith 150-15
Acc			66	54	71	71	71	69	72	44	\$	Purchaser.....PRICE
Lot 115	408	2	0.5	1.6	6.9	11.1	-0.2	-0.2	2.0	14	133.9	Gleneith 47-17
Acc			63	48	71	71	70	68	68	38	\$	Purchaser.....PRICE
Lot 116	495	2	0.5	0.2	7.5	11.2	-0.4	0.7	5.7	12	135.5	Gleneith 103-13
Acc		6	5	58	66	68	68	66	68	48	\$	Purchaser.....PRICE

20 SPECIALLY SELECTED RAMS

Lot No	Tag No	Bt	Bwt	Mwwt	Wwt	Pwwt	Pflat	Pemid	Ygtw	NLW	BLX	SIRE
Lot 1	434	2	0.5	1.2	7.2	10.4	-1.0	-0.2	10.3	10	126.6	Kegra 371-17
Acc			62	46	69	70	69	67	68	37	\$	Purchaser.....PRICE
Lot 2	10	2	0.4	1.4	7.0	10.4	-0.1	0.2	-4.6	10	127.7	Gleneith 311-17
Acc			64	47	71	71	71	69	70	39	\$	Purchaser.....PRICE
Lot 3	46	1	0.4	1.2	7.9	12.1	-0.6	0.1	3.8	11	130.5	Gleneith 47-17
Acc			63	45	71	71	70	68	68	38	\$	Purchaser.....PRICE
Lot 4	282	1	0.5	1.6	7.9	11.5	-0.6	0.9	6.0	11	137.4	Gleneith 358-17
Acc			63	48	70	70	70	67	68	40	\$	Purchaser.....PRICE



20 SPECIALLY SELECTED RAMS

Lot No	Tag No	Bt	Bwt	Mwwt	Wwt	Pwwt	Pflat	Pemd	Ygtiv	NLW	BLX	SIRE
Lot 5 <i>Acc</i>	286	1	0.4	1.2	7.1	10.9	-0.9	0.8	9.0	13	137.8	Gleneith 358-17
			62	44	70	70	70	67	69	40	\$	Purchaser.....PRICE.....
Lot 6 <i>Acc</i>	53	2	0.4	2.2	8.1	12.3	-0.7	0.1	13.3	11	132.7	Kegra 371-17
			62	44	69	69	69	66	67	38	\$	Purchaser.....PRICE.....
Lot 7 <i>Acc</i>	59	2	0.3	1.2	6.0	9.7	0.1	0.6	17.2	10	131.5	Kegra 371-17
			62	45	69	70	69	66	68	39	\$	Purchaser.....PRICE.....
Lot 8 <i>Acc</i>	137	2	0.3	1.1	6.4	9.2	-1.1	0.3	4.3	11	129.8	Gleneith 150-15
			66	56	72	72	72	70	72	43	\$	Purchaser.....PRICE.....



100 RAMS IN PENS OF TWO

Lot No	Tag No	Bt	Bwt	Mwwt	Wwt	Pwwt	Pflat	Pemd	Ygtiv	NLW	BLX	SIRE
Lot 101 <i>Acc</i>	372	2	0.4	0.7	7.6	10.1	-0.8	-0.1	6.5	9	123.4	Gleneith 215-16
			64	44	70	71	70	68	71	38	\$	Purchaser.....PRICE.....
Lot 102 <i>Acc</i>	449	2	0.3	0.6	6.5	9.8	-0.5	0.1	9.6	10	125.9	Gleneith 215-16
			64	41	70	70	70	67	71	36	\$	Purchaser.....PRICE.....
Lot 103 <i>Acc</i>	58	2	0.3	0.9	5.3	8.6	0.6	0.5	14.2	9	128.2	Kegra 371-17
			61	44	69	69	68	65	67	36	\$	Purchaser.....PRICE.....
Lot 104 <i>Acc</i>	99	2	0.3	0.5	6.1	8.7	-0.3	0.4	23.9	13	130.4	Kegra 371-17
			61	41	68	68	68	65	67	36	\$	Purchaser.....PRICE.....
Lot 105 <i>Acc</i>	155	2	0.2	1.1	5.1	8.7	0.0	0.5	6.2	12	132.7	Gleneith 150-15
			64	52	70	71	70	68	71	41	\$	Purchaser.....PRICE.....
Lot 106 <i>Acc</i>	221	2	0.3	1.5	5.7	8.5	-0.4	0.3	5.5	17	134.9	Gleneith 47-17
			62	43	69	69	69	66	67	37	\$	Purchaser.....PRICE.....
Lot 107 <i>Acc</i>	25	2	0.1	1.4	5.6	9.4	-0.3	0.6	12.0	16	134.3	Kegra 371-17
			63	48	70	70	70	67	68	39	\$	Purchaser.....PRICE.....
Lot 108 <i>Acc</i>	247	2	0.2	1.6	6.7	10.3	-0.5	0.4	16.5	10	133.6	Kegra 371-17
			60	43	68	69	68	66	67	37	\$	Purchaser.....PRICE.....

100 RAMS IN PENS OF TWO

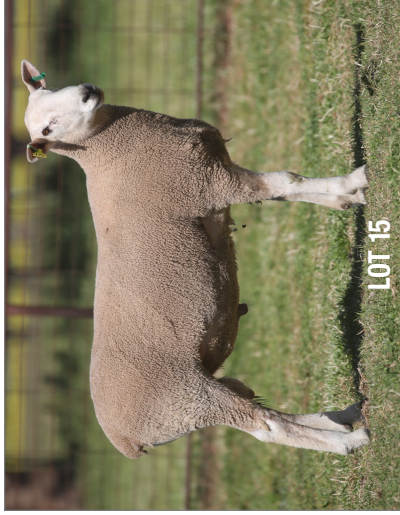
Lot No	Tag No	Bt	Bwt	Mwvt	Wwt	Pwwt	Pflat	Pemnd	Ygtiv	NLW	BLX	SIRE
Lot 93 Acc	354	2	0.4	1.0	6.5	10.3	-0.9	0.3	6.1	13	129.9 \$	Gleneith 311-17 Purchaser.....PRICE
Lot 94 Acc	455	2	0.5	1.0	7.2	11.1	-0.2	0.4	3.9	11	129.3 \$	Gleneith 311-17 Purchaser.....PRICE
Lot 95 Acc	168	2	0.3	1.1	6.9	10.3	0.2	1.1	16.6	15	136.9 \$	Kegra 371-17 Purchaser.....PRICE
Lot 96 Acc	177	2	0.3	1.3	6.7	10.4	0.1	0.9	7.7	13	132.7 \$	Kegra 371-17 Purchaser.....PRICE
Lot 97 Acc	34	2	0.4	1.1	6.2	9.0	-0.3	0.8	5.4	13	131.9 \$	Gleneith 358-17 Purchaser.....PRICE
Lot 98 Acc	384	1	0.4	0.4	6.6	9.2	-0.7	1.2	7.1	9	128.6 \$	Gleneith 358-17 Purchaser.....PRICE
Lot 99 Acc	159	1	0.4	1.2	6.1	8.9	-0.9	0.9	4.1	8	127.7 \$	Gleneith 358-17 Purchaser.....PRICE
Lot 100 Acc	512	1	0.1	1.1	5.1	8.4	0.4	0.5	0.1	10	126.7 \$	Gleneith 150-15 Purchaser.....PRICE

20 SPECIALLY SELECTED RAMS

Lot No	Tag No	Bt	Bwt	Mwvt	Wwt	Pwwt	Pflat	Pemnd	Ygtiv	NLW	BLX	SIRE
Lot 9 Acc	304	1	0.2	0.5	6.1	9.4	0.0	0.9	7.3	14	131.2 \$	Gleneith 358-17 Purchaser.....PRICE
Lot 10 Acc	447	2	0.5	2.1	8.2	11.9	-0.5	-0.1	4.5	11	133.9 \$	Gleneith 47-17 Purchaser.....PRICE
Lot 11 Acc	341	2	0.4	1.8	7.1	11.4	-0.7	-0.1	7.2	13	133.2 \$	Gleneith 47-17 Purchaser.....PRICE
Lot 12 Acc	112	1	0.5	1.8	7.8	10.9	-0.7	-0.2	7.6	8	126.1 \$	Gleneith 215-16 Purchaser.....PRICE
Lot 13 Acc	292	2	0.5	1.0	7.8	10.7	-0.9	0.6	0.4	12	132.9 \$	Gleneith 103-13 Purchaser.....PRICE
Lot 14 Acc	464	3	0.5	1.1	8.3	13.1	-0.6	0.3	6.6	11	135.8 \$	Gleneith 47-17 Purchaser.....PRICE
Lot 15 Acc	426	1	0.4	1.8	7.3	10.8	-0.3	0.6	3.5	16	140.6 \$	Gleneith 358-17 Purchaser.....PRICE
Lot 16 Acc	428	2	0.4	2.2	6.7	9.8	0.0	0.2	-1.3	11	131.4 \$	Gleneith 47-17 Purchaser.....PRICE

20 SPECIALLY SELECTED RAMS

Lot No	Tag No	Bt	Bwt	Mwwt	Wwt	Pwwt	Pflat	Pemd	Ygtw	NLW	BLX	SIRE
Lot 17 Acc	394	1	0.2	1.1	5.3	8.4	-0.4	0.2	5.6	10	124.6	Gleneith 150-15
			65	51	71	71	71	68	72	42	\$	Purchaser.....PRICE
Lot 18 Acc	6	2	0.5	1.7	8.1	11.2	-0.8	0.0	5.7	10	132.5	Gleneith 47-17
			63	43	70	71	70	67	68	37	\$	Purchaser.....PRICE
Lot 19 Acc	175	2	0.3	1.5	6.6	9.8	-1.3	0.5	8.8	13	135.7	Gleneith 358-17
			63	44	70	70	70	67	69	39	\$	Purchaser.....PRICE
Lot 20 Acc	396	1	0.4	1.2	6.1	9.0	-1.0	0.3	4.8	8	126.3	Gleneith 358-17
			62	44	69	70	69	67	68	38	\$	Purchaser.....PRICE



100 RAMS IN PENS OF TWO

Lot No	Tag No	Bt	Bwt	Mwwt	Wwt	Pwwt	Pflat	Pemd	Ygtw	NLW	BLX	SIRE
Lot 85 Acc	182	2	0.3	1.2	5.7	9.0	-0.5	1.0	13	12	135.0	Gleneith 358-17
			63	45	69	70	69	67	68	40	\$	Purchaser.....PRICE
Lot 86 Acc	334	2	0.5	1.2	7.8	11.7	-0.2	0.7	5.8	10	133.5	Gleneith 311-17
			63	44	70	71	70	68	69	36	\$	Purchaser.....PRICE
Lot 87 Acc	386	2	0.1	1.1	3.8	7.6	-0.2	1.0	0.8	13	133.4	Gleneith 150-15
			66	56	72	72	72	70	73	43	\$	Purchaser.....PRICE
Lot 88 Acc	516	2	0.4	2.1	7.0	10.3	-1.0	-0.1	-0.2	12	134.2	Gleneith 47-17
			65	47	72	72	72	69	72	41	\$	Purchaser.....PRICE
Lot 89 Acc	162	2	0.3	1.2	5.6	9.0	0.0	0.4	4.7	10	131.7	Gleneith 150-15
			65	53	70	71	70	68	72	43	\$	Purchaser.....PRICE
Lot 90 Acc	520	2	0.3	2.1	6.1	9.0	-0.8	-0.1	-2.7	12	128.9	Gleneith 47-17
			64	44	71	71	64	63	72	36	\$	Purchaser.....PRICE
Lot 91 Acc	246	2	0.3	1.6	7.4	11.4	-0.7	0.0	9.2	10	132.3	Kegra 371-17
			60	43	68	69	68	66	67	37	\$	Purchaser.....PRICE
Lot 92 Acc	502	1	0.1	1.4	6.0	9.8	0.2	1.3	10.5	13	135.5	Kegra 371-17
			63	46	70	70	70	67	71	39	\$	Purchaser.....PRICE

100 RAMS IN PENS OF TWO

Lot No	Tag No	Bt	Bwt	Mwwt	Wwt	Pwwt	Pflat	Peimd	Ygtiv	NLW	BLX	SIRE
Lot 77 Acc	340	2	0.3 62	1.8 42	6.1 69	10.2 69	-0.7 69	0.0 66	6.9 67	12 35	130.8 \$	Gleneith 47-17 Purchaser.....PRICE
Lot 78 Acc	427	2	0.4 62	2.2 43	7.2 69	10.4 69	0.2 69	0.1 66	-7.0 67	11 37	131.0 \$	Gleneith 47-17 Purchaser.....PRICE
Lot 79 Acc	83	1	0.5 61	1.8 43	7.5 69	10.4 69	-0.4 69	1.8 66	-1.6 68	13 39	143.4 \$	Gleneith 358-17 Purchaser.....PRICE
Lot 80 Acc	526	2	0.5 62	1.6 45	7.2 69	11.9 70	-0.7 69	0.6 67	6.8 70	16 40	139.9 \$	Gleneith 358-17 Purchaser.....PRICE
Lot 81 Acc	103	2	0.4 67	1.8 52	5.9 74	8.8 74	-0.7 74	0.6 72	2.8 72	9 46	129.0 \$	Gleneith 358-17 Purchaser.....PRICE
Lot 82 Acc	230	2	0.2 64	0.8 49	5.8 71	8.8 71	-0.2 70	0.8 68	2.4 71	11 40	129.1 \$	Gleneith 275-14 Purchaser.....PRICE
Lot 83 Acc	141	2	0.5 66	1.0 57	6.2 71	8.7 72	-0.6 71	-0.2 69	13.7 72	7 48	125.9 \$	Gleneith 103-13 Purchaser.....PRICE
Lot 84 Acc	382	2	0.4 65	0.5 56	6.5 70	8.5 71	-0.7 71	0.3 69	7.5 71	7 47	123.7 \$	Gleneith 103-13 Purchaser.....PRICE

100 RAMS IN PENS OF TWO

Lot No	Tag No	Bt	Bwt	Mwwt	Wwt	Pwwt	Pflat	Peimd	Ygtiv	NLW	BLX	SIRE
Lot 21 Acc	91	2	0.4 66	0.5 46	6.4 72	9.4 72	-0.2 71	0.4 69	7.1 72	12 38	126.6 \$	Gleneith 215-16 Purchaser.....PRICE
Lot 22 Acc	561	1	0.4 63	0.8 40	7.2 70	10.7 70	-0.6 70	0.0 67	2.8 71	8 35	125.0 \$	Gleneith 215-16 Purchaser.....PRICE
Lot 23 Acc	508	1	0.5 67	0.5 60	7.4 72	11.4 73	-1.1 72	-0.1 70	9.2 73	9 48	128.1 \$	Gleneith 103-13 Purchaser.....PRICE
Lot 24 Acc	509	1	0.3 64	0.8 42	6.2 71	9.6 71	-0.1 71	1.1 68	10.9 72	7 38	129.6 \$	Gleneith 215-16 Purchaser.....PRICE
Lot 25 Acc	252	2	0.5 62	1.5 43	7.2 69	10.8 70	-0.8 69	-0.1 67	0.9 67	15 37	135.0 \$	Gleneith 47-17 Purchaser.....PRICE
Lot 26 Acc	329	1	0.5 62	1.3 41	8.0 70	12.1 70	-0.8 70	0.4 67	5.2 68	9 37	132.7 \$	Gleneith 47-17 Purchaser.....PRICE
Lot 27 Acc	12	1	0.2 65	1.2 52	7.2 71	11.1 71	-0.4 71	0.4 69	-0.5 72	12 43	132.6 \$	Gleneith 150-15 Purchaser.....PRICE
Lot 28 Acc	404	1	0.3 61	1.3 40	7.8 68	11.9 69	-0.1 68	0.9 66	20.1 67	9 35	134.4 \$	Kegra 371-17 Purchaser.....PRICE

100 RAMS IN PENS OF TWO

Lot No	Tag No	Bt	Bwt	Mwwt	Wwt	Pwwt	Plat	Peimd	Ygtw	NLW	BLX	SIRE
Lot 29	18	2	0.3	0.5	6.5	9.9	-1.0	0.9	5.9	8	128.3	Gleneith 103-13
Acc			66	55	71	71	71	69	72	45	\$	Purchaser
												PRICE
Lot 30	357	1	0.3	1.0	6.3	9.9	-0.4	0.8	2.9	8	128.5	Gleneith 311-17
Acc			61	42	69	70	69	67	68	35	\$	Purchaser
												PRICE
Lot 31	390	1	0.2	1.4	5.9	8.9	0.3	0.1	8.6	10	125.9	Kegra 371-17
Acc			63	48	70	70	70	67	68	38	\$	Purchaser
												PRICE
Lot 32	403	1	0.0	1.2	4.0	6.4	-0.4	1.0	0.9	8	125.6	Gleneith 150-15
Acc			66	56	72	72	72	70	72	43	\$	Purchaser
												PRICE
Lot 33	116	2	0.2	1.0	6.5	9.9	-0.2	0.2	11.0	14	130.9	Gleneith 215-16
Acc			63	42	70	70	61	59	70	33	\$	Purchaser
												PRICE
Lot 34	325	1	0.4	1.2	6.3	10.2	-0.8	0.7	7.4	11	130.2	Gleneith 275-14
Acc			64	50	70	71	70	68	71	41	\$	Purchaser
												PRICE
Lot 35	71	2	0.2	0.9	5.7	7.9	-0.8	0.8	5.3	9	124.4	Gleneith 275-14
Acc			66	55	72	72	71	69	72	45	\$	Purchaser
												PRICE
Lot 36	423	1	0.5	0.7	8.5	11.5	-0.7	0.0	12.1	9	127.4	Gleneith 215-16
Acc			65	42	71	71	71	68	72	38	\$	Purchaser
												PRICE

100 RAMS IN PENS OF TWO

Lot No	Tag No	Bt	Bwt	Mwwt	Wwt	Pwwt	Plat	Peimd	Ygtw	NLW	BLX	SIRE
Lot 69	100	2	0.3	0.5	5.9	9.1	0.3	0.6	17.0	14	131.3	Kegra 371-17
Acc			61	41	68	68	68	65	67	36	\$	Purchaser
												PRICE
Lot 70	296	2	0.3	0.6	5.2	7.8	-0.3	0.7	1.1	12	129.1	Gleneith 103-13
Acc			68	61	72	73	72	70	73	49	\$	Purchaser
												PRICE
Lot 71	291	1	0.3	0.3	5.7	8.7	0.1	0.8	-0.5	10	127.3	Gleneith 103-13
Acc			67	59	72	73	72	70	73	48	\$	Purchaser
												PRICE
Lot 72	542	2	0.4	1.5	5.1	8.5	-0.5	-0.1	4.1	18	127.7	Gleneith 120-16
Acc			62	44	69	69	68	65	69	38	\$	Purchaser
												PRICE
Lot 73	124	1	0.4	0.8	6.5	9.4	-0.3	1.0	7.3	9	131.7	Gleneith 311-17
Acc			62	46	70	70	69	67	68	37	\$	Purchaser
												PRICE
Lot 74	143	2	0.3	1.0	6.7	10.6	0.2	0.9	18.5	9	130.0	Kegra 371-17
Acc			60	43	69	69	69	66	67	36	\$	Purchaser
												PRICE
Lot 75	274	1	0.2	1.6	5.2	7.8	-0.3	0.2	11.3	9	124.3	Kegra 371-17
Acc			61	40	68	69	68	66	67	35	\$	Purchaser
												PRICE
Lot 76	352	2	0.3	0.6	5.6	8.7	-0.2	0.6	-5.9	11	126.4	Gleneith 311-17
Acc			62	46	70	70	70	67	68	36	\$	Purchaser
												PRICE

100 RAMS IN PENS OF TWO

Lot No	Tag No	Bt	Bwt	Mwwt	Wwt	Pwwt	Plat	Pemd	Ygtw	MLW	BLX	SIRE
Lot 61	191	2	0.3	-0.4	6.3	9.9	-0.2	0.8	3.6	11	124.0	Gleneith 311-17
Acc			63	45	70	70	70	67	68	37	\$	Purchaser
												PRICE
Lot 62	322	2	0.3	1.2	6.7	10.4	0.0	0.2	-0.6	16	128.0	Gleneith 215-16
Acc			65	46	71	71	70	68	71	38	\$	Purchaser
												PRICE
Lot 63	183	2	0.2	0.9	6.7	10.5	0.4	0.7	11.1	14	133.9	Kegra 371-17
Acc			61	45	69	69	68	66	67	39	\$	Purchaser
												PRICE
Lot 64	280	2	0.3	1.3	6.8	10.3	0.2	0.4	14.9	11	135.0	Kegra 371-17
Acc			62	46	70	70	69	67	68	39	\$	Purchaser
												PRICE
Lot 65	114	2	0.4	0.8	7.8	11.4	-0.4	0.5	13.5	20	141.5	Gleneith 215-16
Acc			64	42	70	71	70	68	71	38	\$	Purchaser
												PRICE
Lot 66	233	2	0.5	1.7	7.2	10.7	-1.0	0.4	3.4	20	142.3	Gleneith 358-17
Acc			64	49	71	71	71	69	69	42	\$	Purchaser
												PRICE
Lot 67	187	2	0.4	1.5	6.5	8.9	-0.4	0.6	3.1	12	134.6	Gleneith 275-14
Acc			64	51	71	71	70	68	71	41	\$	Purchaser
												PRICE
Lot 68	313	1	0.3	1.3	5.5	8.3	-0.7	0.4	0.9	11	133.4	Gleneith 150-15
Acc			65	53	71	71	71	69	72	43	\$	Purchaser
												PRICE

100 RAMS IN PENS OF TWO

Lot No	Tag No	Bt	Bwt	Mwwt	Wwt	Pwwt	Plat	Pemd	Ygtw	MLW	BLX	SIRE
Lot 37	29	2	0.3	1.3	7.6	11.5	-0.2	0.4	6.5	17	136.0	Kegra 371-17
Acc			62	45	69	70	69	66	68	39	\$	Purchaser
												PRICE
Lot 38	238	2	0.3	1.4	7.1	10.9	0.1	0.8	11.5	16	139.0	Kegra 371-17
Acc			61	43	69	69	69	66	66	37	\$	Purchaser
												PRICE
Lot 39	125	2	0.2	0.9	6.7	9.6	-0.2	1.2	8.0	11	133.8	Gleneith 275-14
Acc			65	51	70	71	70	68	72	42	\$	Purchaser
												PRICE
Lot 40	179	3	0.3	1.3	6.3	10.2	-0.5	0.3	16.4	13	133.9	Kegra 371-17
Acc			62	46	70	70	69	67	68	38	\$	Purchaser
												PRICE
Lot 41	50	2	0.5	1.0	6.6	9.9	-0.5	0.1	11.7	16	134.7	Gleneith 47-17
Acc			64	47	71	71	71	68	68	38	\$	Purchaser
												PRICE
Lot 42	347	2	0.4	1.1	7.8	12.3	-0.3	0.5	-3.7	15	134.3	Gleneith 47-17
Acc			62	44	70	70	69	67	67	37	\$	Purchaser
												PRICE
Lot 43	51	1	0.3	1.7	5.6	9.3	0.2	0.8	2.2	8	128.8	Gleneith 103-13
Acc			68	60	73	74	73	71	74	50	\$	Purchaser
												PRICE
Lot 44	543	2	0.4	1.5	5.0	8.2	-1.0	-0.2	3.0	17	126.1	Gleneith 120-16
Acc			62	44	69	69	68	65	69	38	\$	Purchaser
												PRICE

100 RAMS IN PENS OF TWO

Lot No	Tag No	Bt	Bwt	Mwwt	Wwt	Pwwt	Plat	Peimd	Ygtiv	NLW	BLX	SIRE
Lot 45 Acc	36	2	0.2	1.7	5.1	8.0	-0.5	0.3	-6.7	12	129.1	Gleneith 150-15 Purchaser.....PRICE
			66	56	72	72	72	70	73	45	\$	
Lot 46 Acc	459	2	0.5	0.5	6.6	9.2	-0.7	-0.3	3.7	16	128.9	Gleneith 311-17 Purchaser.....PRICE
			64	50	71	71	71	68	69	39	\$	
Lot 47 Acc	32	2	0.1	1.2	4.9	8.8	0.3	0.8	2.9	13	133.2	Gleneith 150-15 Purchaser.....PRICE
			65	55	70	71	70	67	71	42	\$	
Lot 48 Acc	197	2	0.3	1.1	4.9	7.8	-0.3	1.2	5.2	13	132.6	Gleneith 275-14 Purchaser.....PRICE
			65	54	71	72	71	68	71	41	\$	
Lot 49 Acc	409	2	0.5	1.6	6.9	11.1	-0.2	-0.1	5.6	14	134.6	Gleneith 47-17 Purchaser.....PRICE
			63	48	71	71	70	68	68	38	\$	
Lot 50 Acc	457	2	0.4	2.1	7.6	11.2	-0.9	-0.1	-1.9	14	133.8	Gleneith 47-17 Purchaser.....PRICE
			63	42	70	70	70	67	68	37	\$	
Lot 51 Acc	1	2	0.5	1.5	6.3	8.8	-0.2	0.2	-1.7	13	128.5	Gleneith 311-17 Purchaser.....PRICE
			64	50	71	72	71	69	69	40	\$	
Lot 52 Acc	77	2	0.4	1.5	6.5	8.8	-0.9	0.3	4.8	12	129.2	Gleneith 103-13 Purchaser.....PRICE
			67	60	72	73	72	71	73	49	\$	

100 RAMS IN PENS OF TWO

Lot No	Tag No	Bt	Bwt	Mwwt	Wwt	Pwwt	Plat	Peimd	Ygtiv	NLW	BLX	SIRE
Lot 53 Acc	157	2	0.3	1.8	7.0	10.1	0.0	0.8	6.1	20	142.9	Gleneith 358-17 Purchaser.....PRICE
			62	46	69	70	69	67	68	38	\$	
Lot 54 Acc	431	2	0.5	2.5	7.5	11.0	-0.8	-0.2	9.1	15	137.1	Gleneith 47-17 Purchaser.....PRICE
			63	47	70	71	70	68	67	38	\$	
Lot 55 Acc	181	2	0.4	1.2	6.6	10.1	-0.6	0.4	9.5	11	131.8	Gleneith 358-17 Purchaser.....PRICE
			63	45	69	70	69	67	68	40	\$	
Lot 56 Acc	368	2	0.3	1.6	6.5	9.7	-0.9	-0.5	5.7	15	130.1	Gleneith 47-17 Purchaser.....PRICE
			62	42	69	70	69	66	67	35	\$	
Lot 57 Acc	302	2	0.2	1.2	4.6	8.4	-0.7	0.3	-1.2	14	130.3	Gleneith 150-15 Purchaser.....PRICE
			65	54	71	71	70	68	72	42	\$	
Lot 58 Acc	430	1	0.3	1.4	7.7	10.7	-1.5	-0.1	5.6	11	128.6	Gleneith 47-17 Purchaser.....PRICE
			63	44	70	70	70	67	68	37	\$	
Lot 59 Acc	17	2	0.3	1.4	6.6	9.5	-1.3	-0.2	2.1	12	128.8	Gleneith 150-15 Purchaser.....PRICE
			66	54	72	72	72	70	73	43	\$	
Lot 60 Acc	406	1	0.3	1.6	5.2	8.2	-1.8	-0.3	4.0	11	127.7	Gleneith 150-15 Purchaser.....PRICE
			66	56	72	72	72	70	72	45	\$	